



World Food Programme

SAVING LIVES  
CHANGING LIVES



## WFP Lebanon | Situation Report

November 2025

### OPERATIONAL CONTEXT

A year after the November 2024 ceasefire, tensions between Lebanon and Israel remain high, fueling concerns of renewed escalation. Since the truce, at least 335 people were killed and 973 injured in Israeli strikes, while Israel maintains control over five border positions.

Since the political transition in Syria in December 2024, around 438,000 Syrians have [returned](#) from Lebanon by end of November 2025. Under UNHCR's Self-Organised Voluntary Repatriation programme, launched in July 2025, 119,000 individuals registered interest, and 45,200 individuals received cash grants from UNHCR to support their return, to date.

At the same time, a new displacement wave from Syria has strained resources. According to UNHCR, more than 112,100 Syrians have fled to Lebanon, since December 2024. In November, reported arrivals increased by around 5,600, mainly due to the identification of 4,200 individuals in regions beyond the north and east, alongside a smaller influx into Akkar and the North governorates.

Food security in Lebanon continues to be undermined by conflict aftershocks, inflation, economic stagnation, and widening funding gaps. As a result, and as per the [sixth IPC Acute Food Insecurity Analysis in Lebanon](#), food insecurity is projected to rise, with 1.24 million people (23 percent of the population) estimated to face acute food insecurity between July and October 2025.

### WFP OVERALL RESPONSE

Amid severe funding shortfalls, WFP was forced to further reduce its assistance in November reaching only 43 percent of its planned target of 1.4 million vulnerable people. In November, WFP supported **645,400 vulnerable people**, including 427,900 Syrian refugees, of whom 40,000 are recent arrivals from Syria, and 217,500 vulnerable Lebanese, to meet their food and other basic needs.

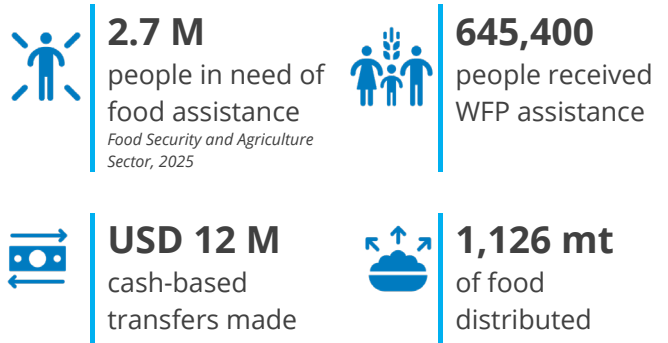


### WFP RESOURCES

(December 2025 – May 2026)

Required	USD 240 M
Available Resources	USD 95 M
Funding Gap	60%

### IN NUMBERS – NOVEMBER 2025



### EMERGENCY FOOD ASSISTANCE AND COMMUNITY KITCHEN SCALE-UP

Since December 2024, the influx of displaced Syrians into western and northern Lebanon has continued to strain resources. In November 2025, WFP provided emergency food assistance to almost **40,000 newly displaced Syrians** residing in shelters and host communities.

Through six commercial kitchens and three rehabilitated Technical and Vocational Education and Training (TVET) school kitchens, WFP delivered, in November, **1.7 million hot and cold meals to 31,700 people across 147 shelters**.

In parallel, WFP is accelerating its transition from commercial catering to a more sustainable, cost-effective, community-based model for meal preparation. In collaboration with the Ministry of Education and Higher Education, **WFP rehabilitates industrial kitchens in public TVET schools**, equipping them to serve crisis-affected populations. In November, **a new kitchen was activated** at Hermel TVET school, providing hot meals to 300 newly arrived Syrians. This complements existing kitchens in Rियाق village in the Bekaa (serving 500 people daily) and Tripoli city, North Lebanon (700 daily), with a fourth facility scheduled to open mid-December.

Moreover, WFP launched the fifth round of out-of-shelter food distributions to displaced Syrians in Akkar governorate reaching almost **8,200 individuals** (2,100 households) with food parcels.

## WFP OPERATIONS



### Assistance for Syrian Refugees

WFP launched its new targeting cycle (November 2025–April 2026) of cash assistance for Syrian refugees, identifying 412,000 eligible individuals (88,700 households) through updated vulnerability scoring and geographic prioritization. Around 11,000 eligible households are placed on hold pending verification by UNHCR. Thus, in November, WFP assisted **338,000 individuals** (73,300 households), a 44 percent decrease from October's 603,000 assisted individuals (129,200 households), primarily due to funding shortfalls.

### Economic Crisis Response Supporting Lebanese

In November, WFP supported **99,400 vulnerable Lebanese** (21,800 households) with in-kind food parcels. However, due to severe funding constraints, WFP will scale-down its regular in-kind food assistance beginning January 2026. The caseload will decrease from approximately 100,000 individuals (24,000 households) to 40,000 (10,000 households), representing a scale-down of nearly 60 percent. This reduction underscores the urgent need for sustained donor support to prevent further reductions in life-saving assistance.

### Support to Social Protection Programmes\* for Lebanese

In September 2025, WFP launched phase two of the Shock-Responsive Social Safety Net cash assistance, assessing the eligibility of 66,200 conflict-affected Lebanese households. Of these, 28,900 were eligible distributed across 19 partners, with 11,700 allocated to WFP plus 3,100 from the initial caseload. In November, transfers covered September assistance, reaching 55,300 individuals.

### School Meals for Lebanese and Refugees

Following the launch of school meals operations for morning shifts in October 2025, WFP extended distributions to afternoon shift students in November. This expansion increased coverage, with the number of Lebanese and Syrian students receiving daily meals rising from 76,000 to 117,800, across 317 primary public schools nationwide, ensuring that children in both shifts have access to nutritious meals that support learning and well-being.

In collaboration with the Ministry of Education and Higher Education, WFP finalized the selection of ten additional school kitchens from a shortlist of 34 schools, increasing the total number of operational kitchens serving the school meals programme to 22. Preparatory work, including rehabilitation and installation of solar energy systems, is underway, with operations scheduled to start in January 2026. The newly selected kitchens are expected to serve around 40 surrounding schools, reaching an estimated 22,000 additional students. This expansion will double the coverage of WFP's healthy school kitchen model, from the current 23,000 students to around 45,000 nationwide.

### Livelihoods for Lebanese and Refugees

WFP and the Business Incubation Association in Tripoli (BIAT) launched FIELD – Food Innovation for Enterprises, Livelihoods and Development, inviting small farmers and MSMEs in Akkar and North Lebanon to apply for technical support and financial assistance. Running from October 2025 to April 2026, the initiative targets 30 small farmers and MSMEs offering technical training, business development support, financial assistance, and research collaboration with the University of Balamand. As part of the EU-funded project “Contributing to Food Security for Refugees and Host Communities Living in Lebanon,” WFP in collaboration with FAO and the Ministry of Agriculture, conducted training sessions on soil health and land rehabilitation, for 2,000 conflict-affected farmers in South Lebanon.

## INCLUSION, PROTECTION AND ACCOUNTABILITY TO AFFECTED POPULATIONS (AAP)

WFP's call centre received **49,000 claims** in November with 94 percent of these claims addressed and closed in the same month. Of the total received claims less than 1 percent were protection related while the remaining calls were to seek WFP assistance, request information about the programme (retargeting exercise of Syrian refugees, distribution and validation issues), and update their personal data. Protection claims were referred to relevant partners for health services, legal counselling, and shelter. WFP also received **683 claims through other channels**, including the cooperating partner's helpdesk and hotlines, the [Maaloumat WFP website](#), and the WFP feedback email address.

In November, WFP and UNICEF concluded the pilot phase of Lebanon's Social and Behavioural Change and Communication (SBCC) plan, [QUDWA](#), in Tripoli, **targeting child labor in WFP-contracted shops**. Over the past year, the initiative has delivered **significant results**. Out of 23 identified children, six high-risk cases were prioritized for intensive case management, while others joined group activities and awareness sessions. **Five contracted shops now operate without child workers**, supported by new tools such as a Pre-Hiring Checklist, Retailer Commitment Acknowledgment, and the QUDWA Impact Tool for monitoring progress in children's safety, education, and well-being. Retailers and staff demonstrated improved knowledge of child protection standards, resulting in safer environments, adjusted working hours, and respectful treatment of children.

## MONITORING AND EVALUATION

In October 2025, WFP **monitored 15 school kitchens** under the school melas programme. All trucks delivering the food items to the kitchens met hygiene and temperature standards, and kitchens were clean, pest-free, and compliant with food safety requirements. No expired or damaged items were found. Mothers volunteering to prepare sandwiches for the students expressed high satisfaction: 60 percent noted that transportation support eased household expenses, while 87 percent reported improved food safety knowledge. Volunteers felt safe, valued training sessions, and showed interest in additional training topics such as parenting and psychosocial support, mentioning increased confidence and social engagement.

## NUTRITION

In November, WFP distributed **fortified date bars** in 63 non-formal education centres reaching 6,600 children. Moreover, WFP delivered refresher **training** for 13 staff of its cooperating partner on malnutrition screening and infant feeding practices using role plays and real-life scenarios and developed new questionnaires to improve data collection, reduce error, and improve reporting accuracy.

## FOOD SECURITY AND AGRICULTURE SECTOR

In October, the Food Security and Agriculture Sector (FSAS) partners, including WFP, reached almost **827,000 individuals across Lebanon**, through food assistance, cash-based transfers, and agricultural support. Food assistance reached 127,000 people, mainly displaced populations, while 699,000 vulnerable individuals received cash assistance. In addition, 860 farmers were supported through capacity building and/or input and assets provision. Overall, the estimated amount of cash disbursed in October is **USD 1.3 million**.

## ADVOCACY, COMMUNICATIONS AND PARTNERSHIPS

From 4–6 November, WFP Lebanon participated in the **Second World Summit for Social Development in Qatar**, alongside global leaders. WFP Lebanon Country Director Matthew Hollingworth spoke on sustainable food systems and joined a [high-level panel organized by Lebanon's Ministry of Social Affairs](#) to share Lebanon's experience in leveraging national systems to deliver emergency support while building shock-responsive social systems. Watch more [here](#).

WFP organized two high-level visits showcasing school meals and cash assistance programmes. Delegates from **Australia, Finland, and Norway** visited two schools in Beirut and Mount Lebanon, observing digital tracking tools, snack distribution, and kitchen operations. Moreover, WFP and UNHCR conducted a joint mission with the **Humanitarian Aid department of the European Commission (ECHO)** to the Bekaa, visiting shelters and informal settlements to review assistance for Syrian refugees and new arrivals. The visits highlighted operational challenges, evolving protection needs, and the impact of cash assistance.

WFP has received its first-ever **in-kind donation of rice from the Republic of Korea** to support vulnerable families and schoolchildren in Lebanon. The 864 mt of Korean rice will boost the WFP's food assistance and national school meals programme. Read more [here](#).

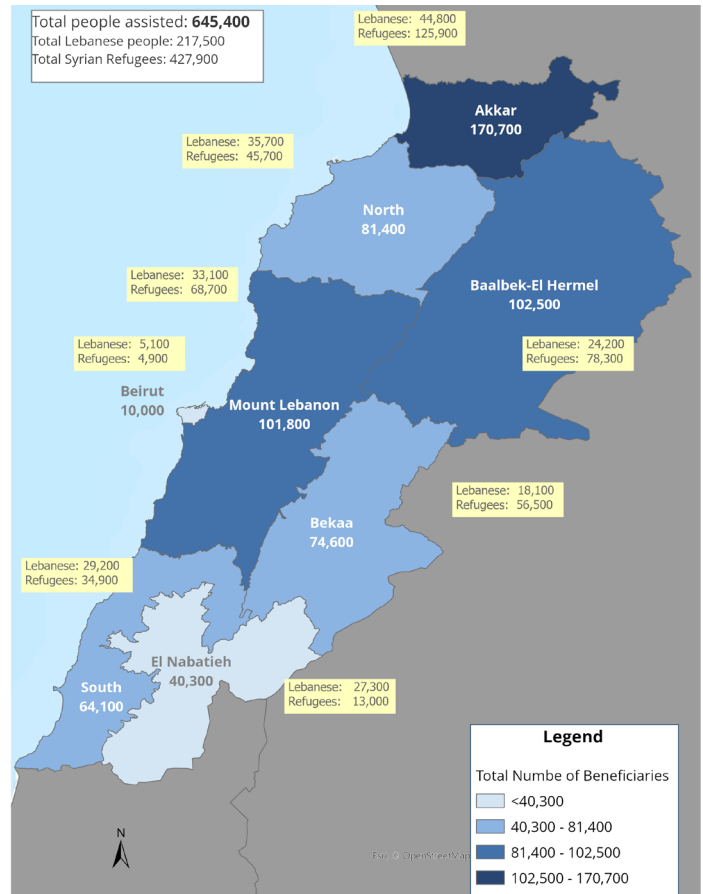
## KEY CHALLENGES

While WFP Lebanon remains committed to supporting national recovery efforts and maintaining readiness for a larger emergency response, **persistent funding shortfalls** hamper its ability to sustain emergency cash assistance for Lebanese, refugee support, and resilience programmes. WFP continues to advocate for funds by engaging key donors and exploring new funding opportunities to meet the high needs.

## Donors

Australia, Austria, Canada, Cyprus, European Commission, France, Germany, Ireland, Japan, Luxembourg, Malta, Norway, Poland, Private Donors, Republic of Korea, Russian Federation, Spain, Sweden, Switzerland, UN and other funds, United Arab Emirates, United Kingdom, USA.

## WFP CASH AND IN-KIND ASSISTANCE FOR REFUGEES AND LEBANESE – NOVEMBER 2025



Rania holds a hot meal prepared for newly displaced Syrian families in shelters.  
© WFP/Mustapha Ghabris

## Volunteering at the WFP community kitchen in Tripoli

Rania is a volunteer at WFP supported community kitchen in Tripoli, part of WFP's emergency response to new arrivals from Syria in northern Lebanon. Every morning, she and dozens of other volunteers prepare huge pots of food that will later be sent to shelters.

"This kitchen is for people who had to leave everything behind," Rania says as she checks a tray before it goes out. "Most of them can't cook where they are staying. They really depend on these meals."

The community kitchen prepares daily hot meals to Syrians staying in shelters across western and northern Lebanon. Once the food is ready, Rania and the team help pack it into large containers which are then delivered to shelters. Like many of the volunteers, Rania also supports her own family. The small daily rate she earns helps cover some basic expenses at home. Through community kitchens, ready-to-eat meals, food parcels, and support to host families, WFP assists tens of thousands of displaced Syrians. Rania sees the impact of this work every day.